

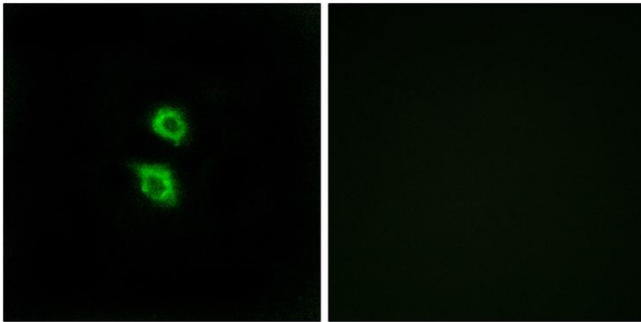


# Arylsulfatase D Polyclonal Antibody

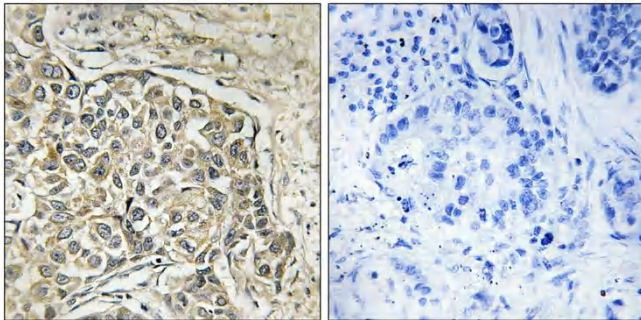
<b>Catalog No</b>	YP-Ab-03726
<b>Isotype</b>	IgG
<b>Reactivity</b>	Human;Rat;Mouse;
<b>Applications</b>	IHC;IF;ELISA
<b>Gene Name</b>	ARSD
<b>Protein Name</b>	Arylsulfatase D
<b>Immunogen</b>	The antiserum was produced against synthesized peptide derived from human ARSD. AA range:331-380
<b>Specificity</b>	Arylsulfatase D Polyclonal Antibody detects endogenous levels of Arylsulfatase D protein.
<b>Formulation</b>	Liquid in PBS containing 50% glycerol, 0.5% BSA and 0.02% sodium azide.
<b>Source</b>	Polyclonal, Rabbit,IgG
<b>Purification</b>	The antibody was affinity-purified from rabbit antiserum by affinity-chromatography using epitope-specific immunogen.
<b>Dilution</b>	Immunohistochemistry: 1/100 - 1/300. Immunofluorescence: 1/200 - 1/1000. ELISA: 1/20000. Not yet tested in other applications.
<b>Concentration</b>	1 mg/ml
<b>Purity</b>	≥90%
<b>Storage Stability</b>	-20°C/1 year
<b>Synonyms</b>	ARSD; Arylsulfatase D; ASD
<b>Observed Band</b>	70kD
<b>Cell Pathway</b>	Lysosome .
<b>Tissue Specificity</b>	Expressed in the pancreas, kidney, liver, lung, placenta, brain and heart.
<b>Function</b>	cofactor: Binds 1 calcium ion per subunit.,PTM:The conversion to 3-oxoalanine (also known as C-formylglycine, FGly), of a serine or cysteine residue in prokaryotes and of a cysteine residue in eukaryotes, is critical for catalytic activity.,similarity:Belongs to the sulfatase family.,tissue specificity:Expressed in the pancreas, kidney, liver, lung, placenta, brain and heart.,
<b>Background</b>	The protein encoded by this gene is a member of the sulfatase family. Sulfatases are essential for the correct composition of bone and cartilage matrix. The encoded protein is postrationally glycosylated and localized to the lysosome. This gene is located within a cluster of similar arylsulfatase genes on chromosome X. A related pseudogene has been identified in the pseudoautosomal region of chromosome Y. [provided by RefSeq, Jul 2011],
<b>matters needing attention</b>	Avoid repeated freezing and thawing!

**Usage suggestions**

This product can be used in immunological reaction related experiments. For more information, please consult technical personnel.

**Products Images**

Immunofluorescence analysis of MCF7 cells, using ARSD Antibody. The picture on the right is blocked with the synthesized peptide.



Immunohistochemistry analysis of paraffin-embedded human lung carcinoma tissue, using ARSD Antibody. The picture on the right is blocked with the synthesized peptide.